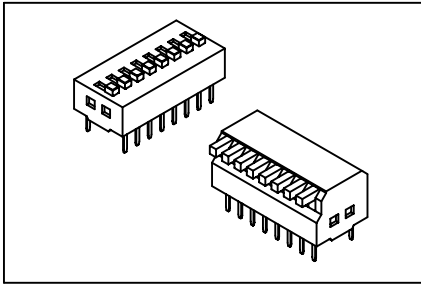


4009 Series

Dip Switch



Features:

- * Dual-in-line (Dip) package switch.
- * 2.54mmX7.62mm(0.10"X0.30") center.
- * Mount directly on PCB, no hardware needed.
- * Tape seal available upon request.
- * Low profile actuator available.

Material:

Housing: 30% Glass filled PBT UL94V-0.
Contacts: Brass.
Plating: Gold plated.

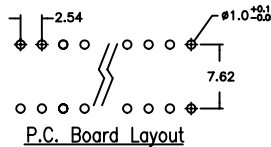
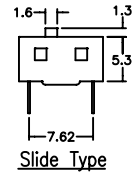
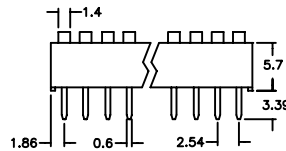
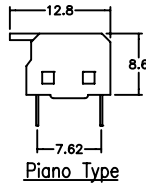
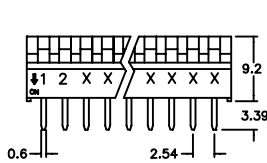
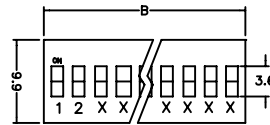
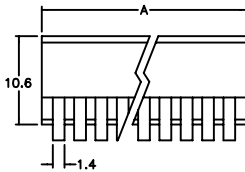
Electrical Characteristics:

Current Rating:(a)100mA 50V DC on load.
 (b)25mA 50V DC on Switching.
 (c)50mA 5V DC on Switching.
Contact Resistance: (a)30mΩ max at initial.
 (b)100mΩ max after life test.
Insulator Resistance: 500V DC 1000MΩ min between adjacent terminals.

Capacitance: 5.0 pf max between adjacent terminals.
Dielectric Breakdown Voltage:500V DC/1 minute.
Operating Temperature: -55°C~+105°C.

Mechanical Characteristics:

Durability:3000 min.
Operating Force:500g max.



Position	Dimension	
	A	B
2	6.26	6.08
3	9.06	8.62
4	11.34	11.16
5	13.88	13.70
6	16.42	16.24
7		18.78
8	21.50	21.32
9		23.86
10	26.58	26.40

Ordering information

4009- 12 S U
 Series No. of Switch Count P: Piano Type R: Blue
 B: Black